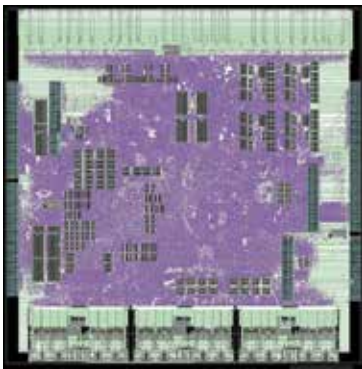


# RADNET™ family of radiation-hardened products

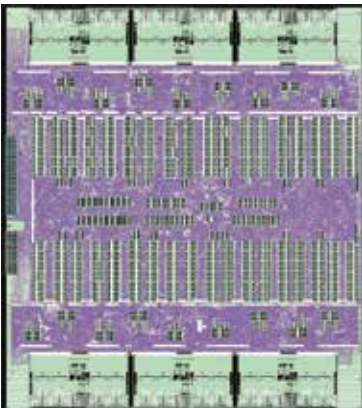
The **RADNET™** family of radiation-hardened application specific standard products (ASSP) includes a wide spectrum of network fabric components that provide mix-and-match capabilities for high-performance interconnections between space electronic elements.

## Description



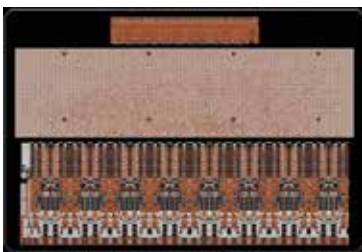
RADNET SRIO-EP ASSP die layout

The **RADNET™ SRIO-EP ASSP** provides connections between the RapidIO Revision 2.1 fabric and alternate interfaces along with access to various memory capabilities external to the ASSP. Alternate interfaces include two XUI high-performance serial link interfaces and lower bandwidth legacy protocol interfaces (four SpaceWire ports, four Inter-integrated circuit (I2C) ports, a serial peripheral interface (SPI), a 32-bit peripheral component interconnect (PCI) Bus, discretes, a MIL-STD-1553B dual-redundant controller, two JTAG master ports, a 32-bit SelectMAP interface, and test and debug interfaces). The SRIO-EP also offers access to two DDR3 SDRAM controllers, a flash memory controller, an EEPROM interface, an internal 4 KB priority scoreboard and 256 KB of internal SRAM.



RADNET 1848-PS ASSP die layout

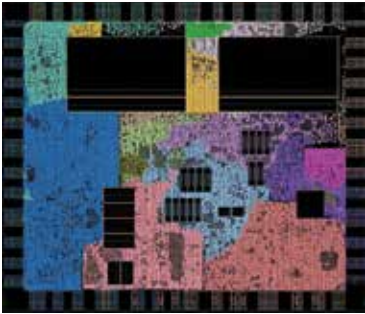
The **RADNET™ 1848-PS ASSP** enables high-performance serial RapidIO revision 2.1 packet switching to up to 18 ports across 48 lanes, enabling larger on-board RapidIO networks. Based on the Integrated Device Technology (IDT) CPS-1848™ switch product, the 1848-PS uses user-programmable ports of flexible width, allowing support for up to 12 four-lane ports or 18 ports of varied widths (combinations of 1x, 2x and 4x) across a non-blocking crossbar. Switch capabilities include short and long-run support, pseudo-random binary sequence generation, programmable post- and pre-emphasis, transmitter and receiver-based flow control, multicast support, and individual port control and reset. I2C primary/replica interfaces are provided, along with joint test action group test and debug capabilities, which may configure any interface either autonomously or under external control.



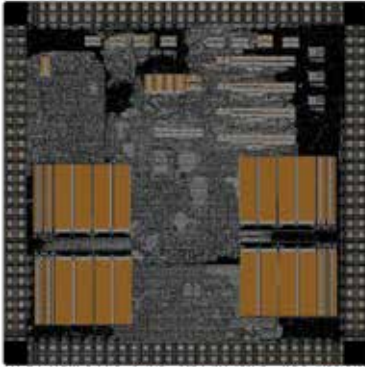
RADNET 1616-XP ASSP die layout

The **RADNET™ 1616-XP ASSP** provides protocol-agnostic connections to support use with serializer / deserializer based protocols such as Aurora, XAUI and RapidIO®. The 1616-XP provides broadcast, multicast, and unicast circuit switching for 16 input to 16 output SerDes lanes on a lane-by-lane basis with low latency and lower power than packet switches. Receivers have programmable input equalizers and automatic termination calibration. Drivers have programmable de-emphasis and output drive levels with integrated 50 Ohm output impedance. I2C and JTAG interfaces are provided for configuration, test, and debug.

## Description



RADNET SpW-EP ASSP die layout



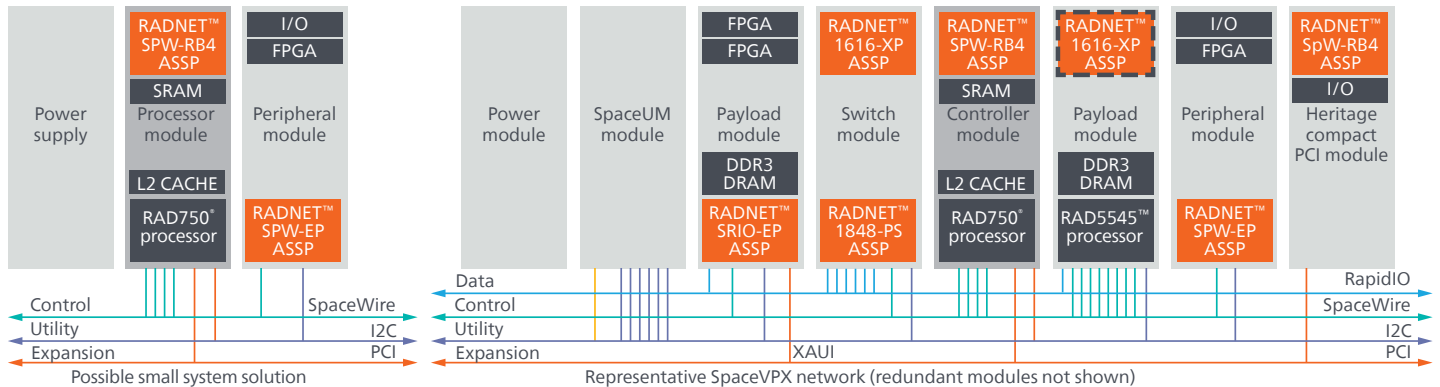
RADNET SpW-RB4 ASSP die layout

The **RADNET™ SpW-EP ASSP** enables a low-power, high-performance connection between SpaceWire fabric, remote instruments, and peripherals through a variety of matched interfaces. Interfaces include a dual-redundant 256 Mb/s SpaceWire port, a 32-bit bidirectional first-in, first-out interface, discretes, a 16-bit SelectMAP interface, two I2C ports, one service provider interface, one universal-asynchronous receiver-transmitter and JTAG primary, and replica interfaces for test and debug. A 32-bit embedded RISC microprocessor assists with data movement and protocol execution. The SpW-EP provides memory access to a 32-bit SRAM/PROM interface and 32 KB of internal SRAM. Power dissipation is typically between 0.1 to 1.4 Watts, depending on speed and interfaces in use.

The **RADNET™ SpW-RB4 ASSP** provides connections between four ports of SpaceWire fabric and alternative interfaces with access to large memory capacity. This general purpose connection device may also serve as a processor bridge to processors in the RAD750® family. Interfaces include four 256 Mb/s SpaceWire ports, a 64-bit 66 MHz PCI Bus, a 32-bit 33 MHz PCI Bus, discretes, a dual redundant MIL-STD-1553B controller, a 32-bit FIFO interface, one UART, and a dual JTAG interfaces for test and debug. The SpW-RB4 also provides direct access to 96 KB of internal SRAM and up to 4 GB of external SRAM/PROM/SDRAM with selectable parity, nibble, or Reed Solomon error correcting code. A 32-bit embedded RISC microprocessor assists with data movement and protocol execution.

Together, these five RADNET ASSPs form the basis for current and future high-performance SpaceVPX modules that leverage its fabrics to move data efficiently between space electronic assemblies. All RADNET™ family products are designed to operate seamlessly with our RAD750® processor and RAD5545™ system-on-chip as well as future processor products.

## Hardware block diagram



### For more information contact:

BAE Systems

9300 Wellington Road  
Manassas, Virginia 20110-4122

T: 571 364 7777

W: [baesystems.com/space](http://baesystems.com/space)

Cleared for open publication on 07/18

### Disclaimer and copyright

This document gives only a general description of the product(s) and service(s) and, except where expressly provided otherwise, shall not form any part of any contract. From time to time, changes may be made in the products or the conditions of supply.

BAE Systems reserves the right to restrict component sales based on application and volume. Please contact the factory for more information.

BAE SYSTEMS is a registered trademark of BAE Systems plc.  
© 2025 BAE Systems. All rights reserved.  
CS-17-A05 Family