



The Fight Against Insurance Fraud

BAE Systems

10th October 2019



abi.org.uk



[@BritishInsurers](https://twitter.com/BritishInsurers)

Scale of fraud has driven change of mindset

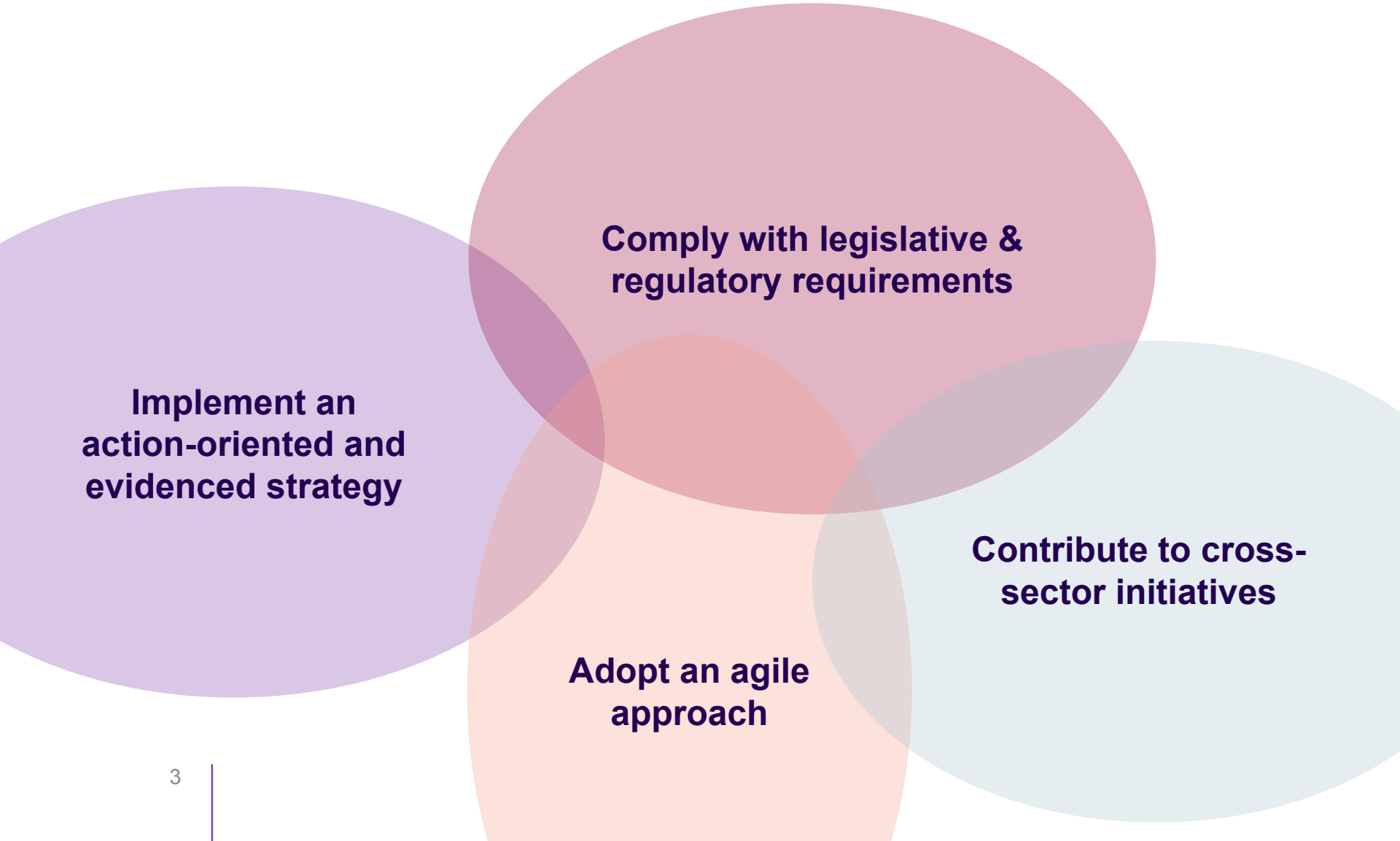
Streamlined counter fraud governance framework

Implementation of IFB 2020 Vision

More innovative approach to front-end prevention

Sweeping personal injury reforms

FUTURE-PROOFING APPROACH TO COUNTER FRAUD

A Venn diagram consisting of four overlapping circles. The top circle is reddish-pink and contains the text 'Comply with legislative & regulatory requirements'. The left circle is purple and contains the text 'Implement an action-oriented and evidenced strategy'. The bottom circle is orange and contains the text 'Adopt an agile approach'. The right circle is light blue and contains the text 'Contribute to cross-sector initiatives'. The circles overlap in various combinations, creating darker shades of their respective colors.

**Implement an
action-oriented and
evidenced strategy**

**Comply with legislative &
regulatory requirements**

**Adopt an agile
approach**

**Contribute to cross-
sector initiatives**

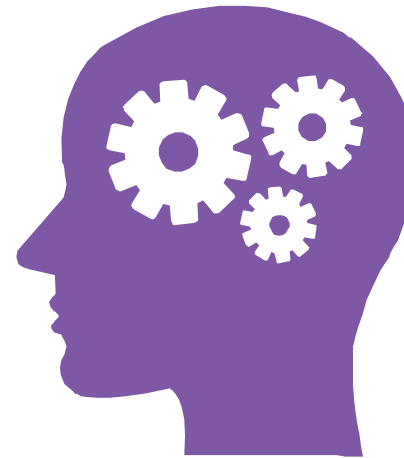
USING HISTORY TO GUIDE FUTURE STRATEGY

**STA - identifying
emerging risks**

**Counter fraud
communications**



Fraud statistics



Behavioural science

USING TECHNOLOGY TO SUPPORT STRATEGY

STRATEGY

Single point of access
Adapt to external influencers

IMPLEMENTATION

AI
Biometrics
Telematics
Internet of Things
Blockchain

RISKS

Dark Web
Google Ad Spoofs
AI

Mark Allen
Manager, Fraud and Financial Crime
DD: +44(0)20 7216 7573
M: +44 (0) 7725 245 294
Mark.Allen@abi.org.uk
abi.org.uk



Association of British Insurers
One America Square, 17 Crosswall,
London EC3N 2LB
T: +44 (0) 207 600 3333 | abi.org.uk

Association of British Insurers