

TDL NETWORKS DON'T JUST MONITOR THEM, MANAGE THEM

MLM

INTEGRATED BATTLE COMMAND

INTELLIGENCE & CYBER SECURITY

GLOBAL COMBAT NETWORKS

AIR DEFENCE

BORDER, FACILITIES & FORCE PROTECTION

BUSINESS SOLUTIONS

BUSINESS SERVICES



BAE Systems' MLM (Multi-Link Manager) provides you with all the tools necessary to support the active and dynamic management of TDL (Tactical Data Link) networks.

Without disrupting a network in use, you can quickly correct network problems or implement new plans without negatively impacting network performance or efficiency.

Exploitation of MLM allows warfighters to plan, evaluate, participate, monitor, dynamically manage and analyse complex multi-link networks including Link 11, Link 16 and IJMS.

MLM ensures a network is not just planned to be effective, but that it remains effective.



MLM provides an unparalleled ability to statistically compare the performance of Link 16 network designs against operator definable scenarios. Network performance under different operational conditions can be evaluated.

Combining MLM with the BAE Systems TDL simulation product AGILE2™ and a network emulator allows assessment of how the individual platforms transmit datalink messages within a pre-defined operational scenario. Any number of the simplest to the most complex scenarios can be created.

Network performance is measured and recorded allowing direct comparison against scenarios.

Evaluation predictions

Compare same design against different network scenarios

Compare different designs against same network scenario

Validate OPTASK link import format and assignments

Network/unit NPG usage levels

Network/unit TSDF/ETSDF levels

GeoArea FCA levels

Dynamic realtime displays

Full statistical recording

Microsoft Excel formatted output

Network design formats

JNDA design output (JNL/JJL format)

TNDS output format (Common Network Design format)

INDE format NETMAN T/1

Functions

Single/multi-terminal solutions

Single/multi-network capability

Single/multi-link connectivity

Single/multi-operator configurations

Link 16 design evaluation

Multi-link architecture planning

Multi-link equipment control

Multi-link monitoring

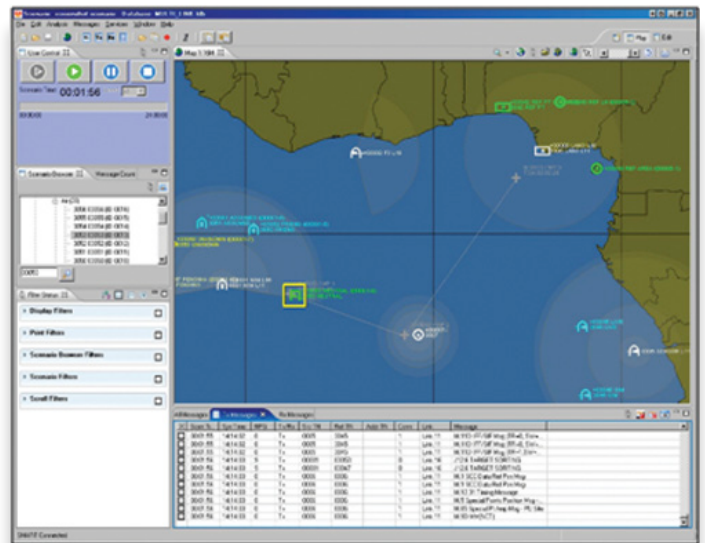
Dynamic network management

Frequency clearance agreement monitoring

Post mission analysis

Embedded operator training

**THE EFFICIENT
CAPACITY
MANAGEMENT OF
CRITICAL DATA LINK
NETWORKS IS VITAL
IN ENSURING FORCE
EFFECTIVENESS IS
NOT DEGRADED**



FOR MORE INFORMATION CONTACT:

BAE SYSTEMS plc
Alvington
Yeovil
Somerset
BA22 8UZ

Telephone: +44 (0) 1935 443000
Facsimile: +44 (0) 1935 443111

enquiries@baesystems.com
www.baesystems.com

Disclaimer and copyright

This document gives only a general description of products and services and except where expressly provided otherwise shall not form part of any contract. From time to time, changes may be made in the products or conditions of supply.

© BAE Systems plc 2011. All rights reserved.

Permission to reproduce any part of this publication should be sought from BAE Systems plc. Permission will usually be given, provided the source is acknowledged.

BAE SYSTEMS is a registered trade mark of BAE Systems plc.

