

# TDL NETWORKS - DON'T JUST MONITOR THEM, MANAGE THEM

**MLM**

INTEGRATED BATTLE COMMAND

INTELLIGENCE & CYBER SECURITY

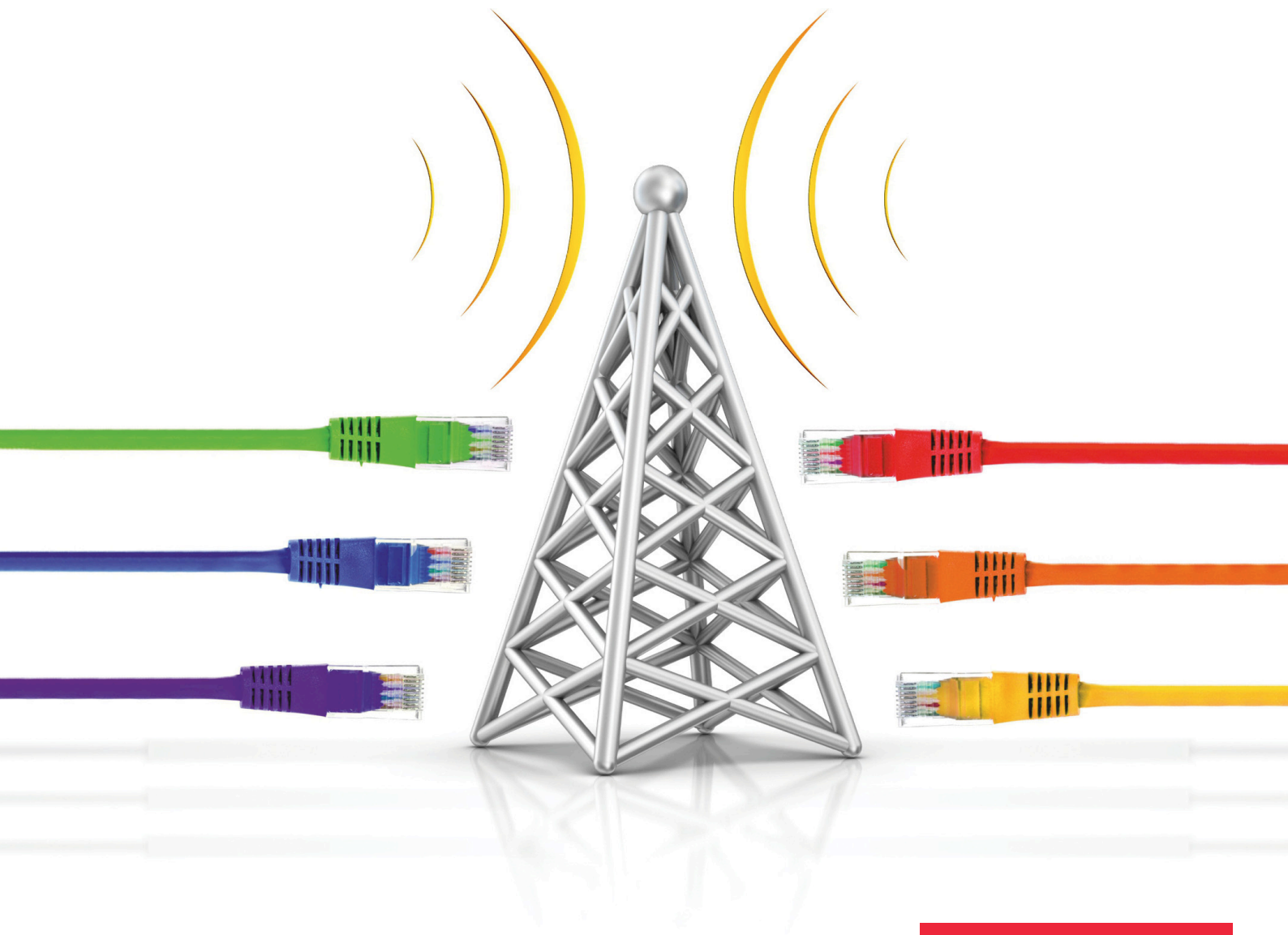
GLOBAL COMBAT NETWORKS

AIR DEFENCE

BORDER, FACILITIES & FORCE PROTECTION

BUSINESS SOLUTIONS

BUSINESS SERVICES



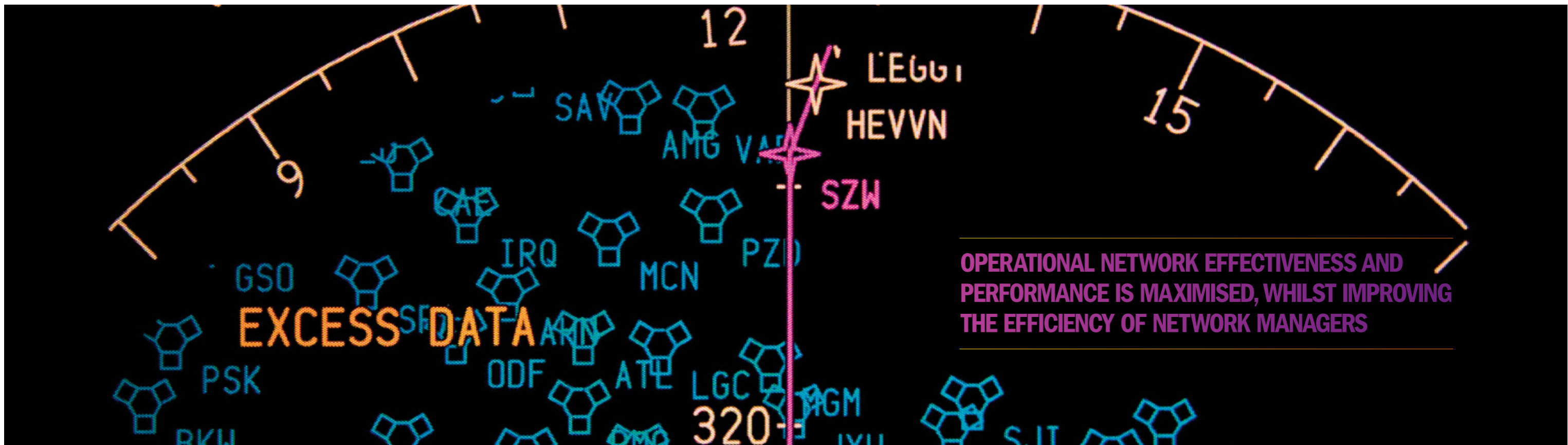
**BAE SYSTEMS**

REAL INFORMATION. REAL ADVANTAGE.



**THE EFFICIENT CAPACITY MANAGEMENT OF CRITICAL DATA LINK NETWORKS IS VITAL IN ENSURING FORCE EFFECTIVENESS IS NOT DEGRADED**

---



**OPERATIONAL NETWORK EFFECTIVENESS AND PERFORMANCE IS MAXIMISED, WHILST IMPROVING THE EFFICIENCY OF NETWORK MANAGERS**

No plan is ever perfect. BAE Systems' MLM (Multi-Link Manager) provides you with all the tools necessary to support the active and dynamic management of TDL (Tactical Data Link) networks.

Without disrupting a network in use, you can quickly correct network problems or implement new plans without negatively impacting network performance or efficiency.

MLM ensures a network is not just planned to be effective, but that it remains effective.

## DATA LINK NETWORK PROVISION AT ITS BEST

Developed by BAE Systems, MLM allows you to plan, evaluate, participate, monitor, assess and compare all aspects of multi-link operations, including Link 11, Link 16 and IJMS (Interim JTIDS Message Specification). MLM delivers the right information, to the right people, at the right time.

During the network planning phase, plans can be automatically generated directly from OPTASK Link and ATO (Air Tasking Order) signals and combined with your TDL network design information. Alternatively, you can dynamically modify TDL network parameters in operation. With clear and configurable displays you can be sure, no matter how complex the TDL architecture is, that you can always find the information you need, when you need it, improving your efficiency.

With unparalleled ability to statistically compare the performance of TDL network designs against operator definable scenarios, MLM allows you to evaluate performance under different operational conditions. The combination of MLM and the BAE Systems TDL simulation product AGILE2 lets you assess how the individual platforms transmit TDL messages within a predefined operational scenario. Any number of the simplest, to the most complex, scenarios can be created. TDL network performance is measured and recorded allowing for optimisation and effective fine tuning and correction.

Meeting demanding requirements, MLM delivers TDL network provision at its best. You can operate MLM as a single terminal or a multi-terminal solution across any number of remote sites. Terminals can be controlled independently, or collectively, improving your efficiency and effectiveness.

During live operations, MLM constantly monitors the TDL networks, alerting you to any deviations from your plan. TDL network and platform performance, usage and connectivity information is assessed to detect TDL network problems and bottlenecks that could impact operational effectiveness. Predictive "what-if" changes allow you to evaluate the impact of potential changes before implementation.

With the ability to automatically monitor multiple, concurrent, TDL networks, compliance with local FCA (Frequency Clearance Agreement/Assurance) is safeguarded.

MLM allows you to record and analyse the multi-TDL operation, allowing comprehensive post operational training feedback and debrief benefit.

MLM allows you to train within a realistic virtual world, with easily created scenario based missions. Simulated platforms accurately emulate the behaviours of real units down to the timeslot level including responding to the remote TDL network management updates you make.

Automatically generated TDL network and equipment errors allow for the refinement of your skills and knowledge in a safe, yet challenging environment. MLM delivers a comprehensive training capability, safeguarding TDL network operational effectiveness.

## DELIVERING THE RIGHT INFORMATION, TO THE RIGHT PEOPLE, AT THE RIGHT TIME

Intuitive to use, reducing your training burden and improving operator and network efficiency

Scaleable, supporting single, multiple networks and terminals

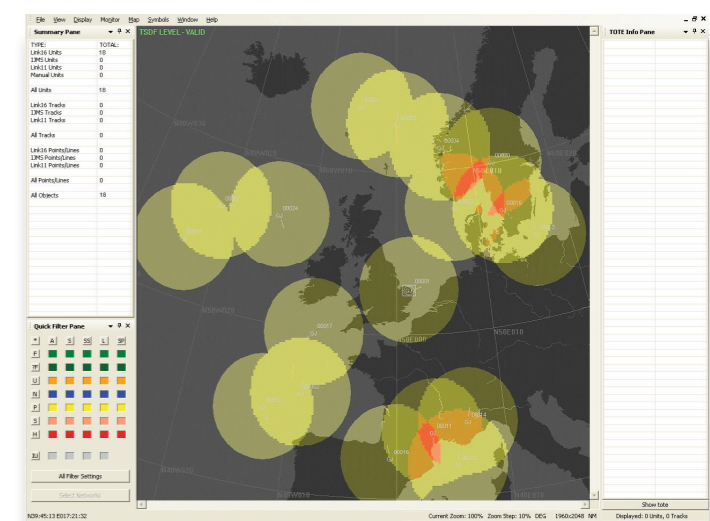
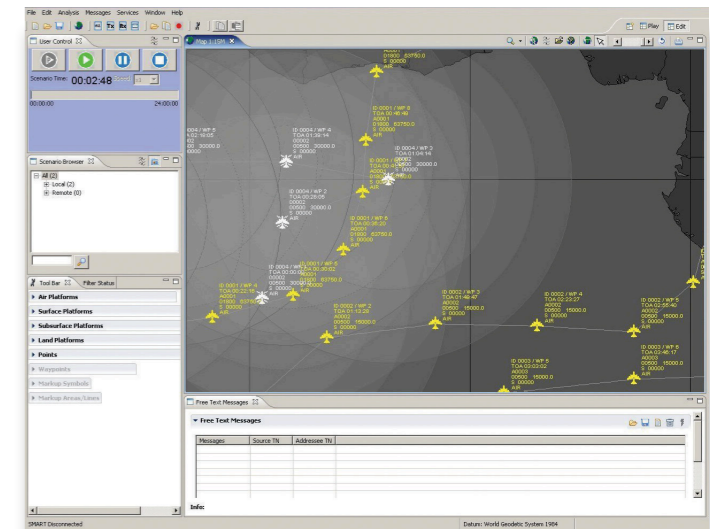
Supports Link 11, Link 16 and IJMS

Suitable for use in any environment, including networked at a main base or supporting deployed expeditionary and coalition operations

Monitors concurrent or multiple networks for FCA compliance

Ability to record, replay and analyse single or multiple TDL networks

Embedded training, allowing you to train as you fight, and fight as you train



# **MLM (MULTI-LINK MANAGER)**

**PLAN, EVALUATE, PARTICIPATE, MONITOR, MANAGE &  
ANALYSE COMPLEX MULTI-LINK NETWORKS**



**IMPROVE OPERATIONAL TDL NETWORK EFFECTIVENESS**

**REDUCE TDL TRAINING BURDEN**

**IMPROVE TDL NETWORK MANAGER EFFICIENCY**

**REDUCE TDL NETWORK DOWNTIME**

**INCREASE TDL NETWORK PERFORMANCE**

**FOR MORE INFORMATION CONTACT:**

BAE Systems plc  
Alvington  
Yeovil  
Somerset  
BA22 8UZ

Telephone: +44 (0) 1935 443000  
Facsimile: +44 (0) 1935 443111

[enquiries@baesystems.com](mailto:enquiries@baesystems.com)  
[www.baesystems.com](http://www.baesystems.com)

© BAE Systems plc 2011. All rights reserved.  
Permission to reproduce any part of this publication should be sought from BAE Systems plc. Permission will usually be given, provided the source is acknowledged.

BAE SYSTEMS is a registered trade mark of BAE Systems plc.

