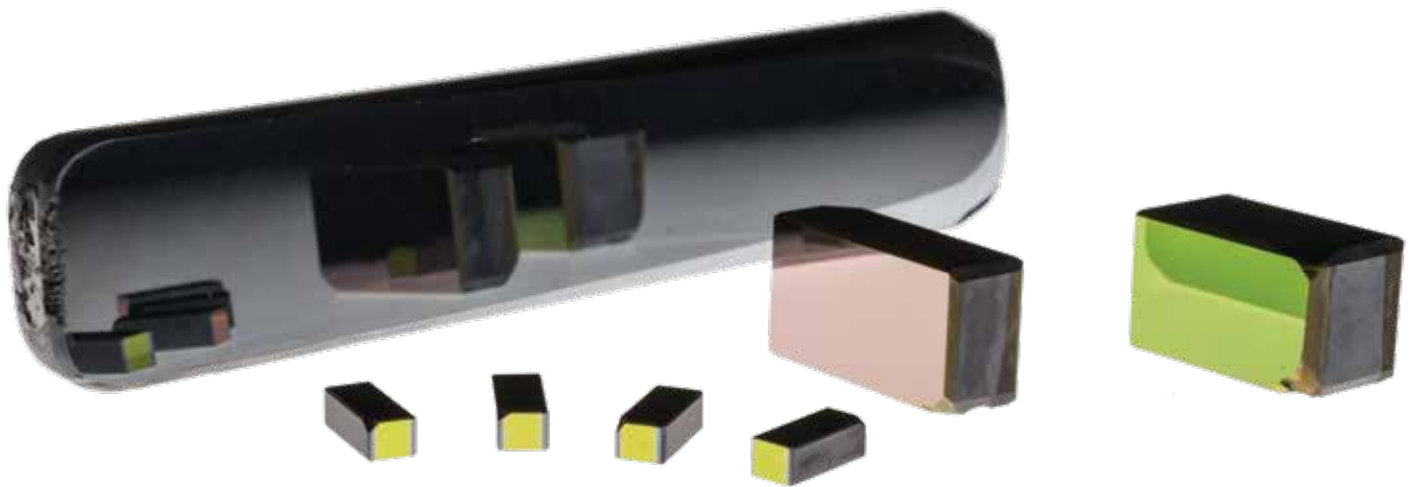


# Zinc germanium phosphide

Non-linear optical crystal



Zinc Germanium Phosphide ( $\text{ZnGeP}_2$ ) is the nonlinear optical crystal of choice in the 2–8  $\mu\text{m}$  spectral range due to its high thermal conductivity. Material improvements were made possible by advances in processing at BAE Systems. These advances have greatly reduced the defect-related absorption losses near the bandedge.

Zinc Germanium Phosphide can be used throughout its full transparency range in the mid-IR and has achieved high efficiencies and output power in the 3-5  $\mu\text{m}$  range.

## Features

High non-linear coefficient:  
 $d_{14}=75 \text{ pm/V}$

High thermal conductivity:  
35 W/m-K

Birefringence allows for most phase matching interactions over transparency range while producing minimal walkoff

Thermal and mechanical robustness

## Benefits

Enables efficient frequency conversion

Allows high-power operation with manageable thermal lensing

Converts 2 $\mu\text{m}$  light into other wavelengths over the 2–8  $\mu\text{m}$  region of highest transparency

Allows for straightforward fabrication of device oriented crystals

Available in large apertures for high energy applications

Note: Large-aperture material (>10 x 10 mm<sup>2</sup>) available upon request

# State-of-the-art crystal growth and processing

## Crystallographic data

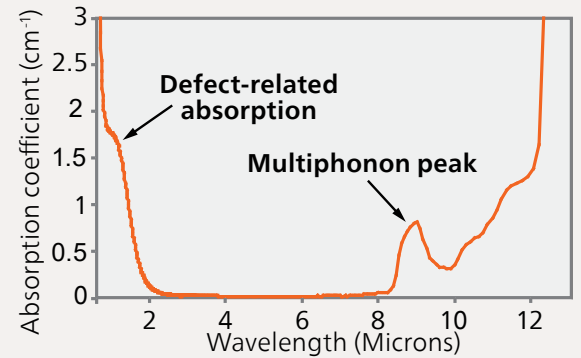
Chemical formula	ZnGeP <sub>2</sub>
Structure	Chalcopyrite
Crystal class and symmetry	Tetragonal (42m)
Lattice constants (Å)	a=5.465, c=10.707
Xray density (g/cm <sup>3</sup> )	4.153

## Thermomechanical properties

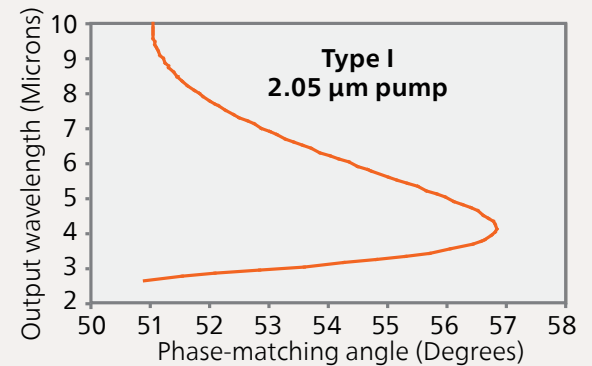
Hardness H, (kg/mm <sup>2</sup> )	980
Melting point (°C)	1027
Specific heat (J/g-K)	0.47
Thermal conductivity (W/m-K)	35
Thermal expansion coefficient (10 <sup>-6</sup> °C <sup>-1</sup> )	5.0 (  c), 7.8 (⊥c)

## Optical properties

Transparency range (μm) <sup>a</sup>	0.72 to 12.3	
Nonlinear coefficient, d <sub>14</sub> (pm/V) <sup>b</sup>	75	
Refractive index <sup>c</sup>	n <sub>o</sub>	
2.0 μm	3.148	3.190
4.0 μm	3.123	3.169
4.6 μm	3.119	3.156
9.2 μm	3.085	3.124
Sellmeier coefficients (n <sup>2</sup> = A + (Bλ <sup>2</sup> ) / (λ <sup>2</sup> - C) + Dλ <sup>2</sup> )	n <sub>o</sub>	n <sub>e</sub>
A	8.0409	8.0929
B	1.68625	1.8649
C	0.40824	0.41468
D	1.28801	0.84052
E	611.05	452.05
Absorption coefficient, α (cm <sup>-1</sup> )	o pol.	e pol.
1.06 μm	<1.6	<1.8
2.05 μm	<0.07	<0.15
3-8 μm	<0.01	<0.01
9.2 μm	0.59	0.50
Laser-damage threshold (J/cm <sup>2</sup> )	>3.0	



Optical absorption



Type I phase-matching curve for 2.05 micron pump source

## Sample size and orientation

Standard cut is for Type I phase matching,  $\phi=0^\circ$  (Type II,  $\phi=45^\circ$  is also available)

Typical dimensions are 6mm x 6mm x 14 mm<sup>3</sup>  
Larger sizes up to 15 x 15 x 22mm<sup>3</sup> available)

Thin plates are available up to 25 x 25 mm<sup>2</sup>

Phase-matching angles

2.05-μm pumped degenerate OPO	56.9°
9.27-μm pumped SHG	61.6°

NOTES: <sup>a</sup> Range over which the absorption coefficient, α, is below 3 cm<sup>-1</sup>.

<sup>b</sup> The value 111 pm/V in early ZnGeP<sub>2</sub> literature is based on an obsolete value for d<sub>14</sub> GaAs

<sup>c</sup> n<sub>o</sub> = ordinary polarized (E⊥c), n<sub>e</sub> = extra-ordinary polarized (E||c)

## Disclaimer and copyright

This document gives only a general description of the product(s) and service(s) and, except where expressly provided otherwise, shall not form any part of any contract. From time to time, changes may be made in the products or the conditions of supply.

BAE SYSTEMS is a registered trademark of BAE Systems plc.  
© 2025 BAE Systems. All rights reserved.  
CS-16-H85-02

## For more information contact:

BAE Systems, Inc.  
Kevin Zawilski  
crystals.dles@baesystems.us  
<https://baesystems.com/crystals>

Cleared for open publication on 02/17