

# TDL NETWORKS DON'T JUST MONITOR THEM, MANAGE THEM

## MLM

INTEGRATED BATTLE COMMAND

INTELLIGENCE & CYBER SECURITY

GLOBAL COMBAT NETWORKS

AIR DEFENCE

BORDER, FACILITIES & FORCE PROTECTION

BUSINESS SOLUTIONS

BUSINESS SERVICES



BAE Systems' MLM (Multi-Link Manager) provides you with all the tools necessary to support the active and dynamic management of TDL (Tactical Data Link) networks.

Without disrupting a network in use, you can quickly correct network problems or implement new plans without negatively impacting network performance or efficiency.

Exploitation of MLM allows warfighters to plan, evaluate, participate, monitor, dynamically manage and analyse complex multi-link networks including Link 11, Link 16 and IJMS.

MLM ensures a network is not just planned to be effective, but that it remains effective.



Meeting demanding operational requirements, MLM can be operated as a single terminal based solution or a multi-terminal solution.

Terminals can be controlled independently, by associated network or as a whole, allowing fast system initialisation and network participation. Your efficiency and effectiveness is improved.

Remote control and monitoring of any number of remote sites includes initialisation data transfer and updates; status block monitoring; full power and terminal discrete control; built-in-test and diagnostics; Link 16 voice routing; monitoring and use; remote DTS control and monitoring; remote clear/secure HF/ UHF voice.

## Terminal control

CLEW/SLEW selection  
Discrete control  
DTS data rate  
DTS operating mode  
DTS polling list entry  
ETR network synchronisation  
Init block update  
Mission parameter updates  
Navigation/position selection  
Standard network synchronisation  
Terminal initialisation  
Voice net/control channel updates

## Supported terminals

AN/URC-138 LVT(SHAR/SKW)  
MCE Class II  
MIDS LVT 1,4,6 & 7  
MIDS LVT 2, 11  
MIDS LVT 3 (FDL)  
MIDS LVT 5 (MIDS-On-Ship)  
MX512P (ATDS/NTDS)  
RN Class II  
UKADGE Class II

## Status monitoring

BIT data requests and manual status field editing  
DTS polling error status  
GPS position and status  
Init block requests  
Network status  
On-going terminal status  
PTFE time and status  
Status block requests

## Network participation

ANFT/J28.2 Messages Tx/Rx  
Pointer and Reference Point Tx/Rx  
2.4kbps/16kbps Link 16 ERV Tx/Rx  
HF/UHF Clear/Secure Voice Rx/Tx  
Own unit reporting

## TDL architecture visualisation

Network summary  
Network group summary  
Operator configurable unit summary  
Activity timeline  
Duty timeline  
Link 16 timeslot map

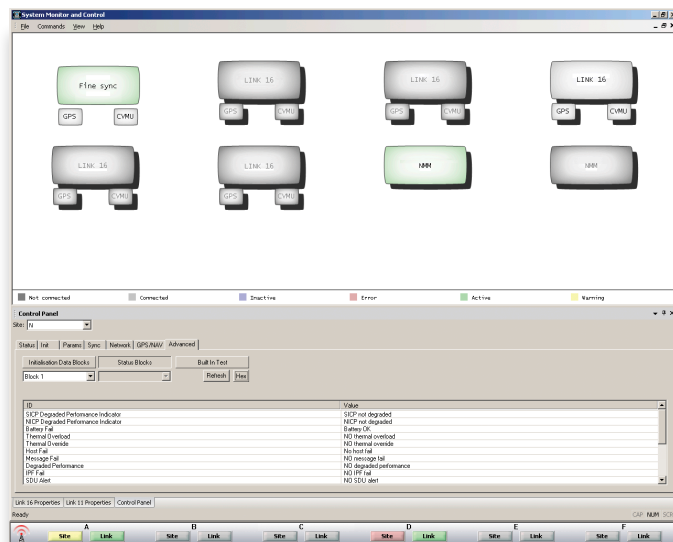
## Functions

Single/multi-terminal solutions  
Single/multi-network capability  
Single/multi-link connectivity  
Single/multi-operator configurations  
Link 16 design evaluation  
Multi-link architecture planning  
Multi-link equipment control  
Multi-link monitoring  
Dynamic network management  
Frequency clearance agreement monitoring  
Post mission analysis  
Embedded operator training

## Deployment options

Fixed multi-site ground infrastructure  
Maritime standalone or integrated solutions  
Remote or local control options  
Standalone expeditionary capability

**THE EFFICIENT  
CAPACITY  
MANAGEMENT OF  
CRITICAL DATA LINK  
NETWORKS IS VITAL  
IN ENSURING FORCE  
EFFECTIVENESS IS  
NOT DEGRADED**



## FOR MORE INFORMATION CONTACT:

BAE SYSTEMS plc  
Alvington  
Yeovil  
Somerset  
BA22 8UZ

Telephone: +44 (0) 1935 443000  
Facsimile: +44 (0) 1935 443111

enquiries@baesystems.com  
www.baesystems.com

## Disclaimer and copyright

This document gives only a general description of products and services and except where expressly provided otherwise shall not form part of any contract. From time to time, changes may be made in the products or conditions of supply.

© BAE Systems plc 2011. All rights reserved.

Permission to reproduce any part of this publication should be sought from BAE Systems plc. Permission will usually be given, provided the source is acknowledged.

BAE SYSTEMS is a registered trade mark of BAE Systems plc.

